



Post-Congress Tour 6: Yardang Landform & Silk Road Customs Expedition, Xinjiang Uygur Autonomous Region

June 13-17, 2026

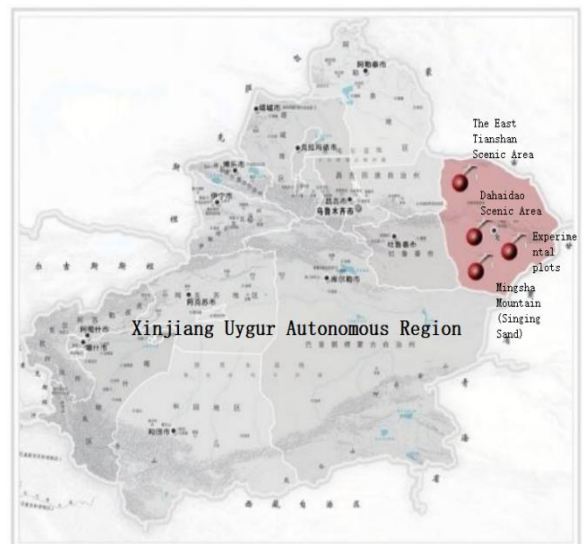
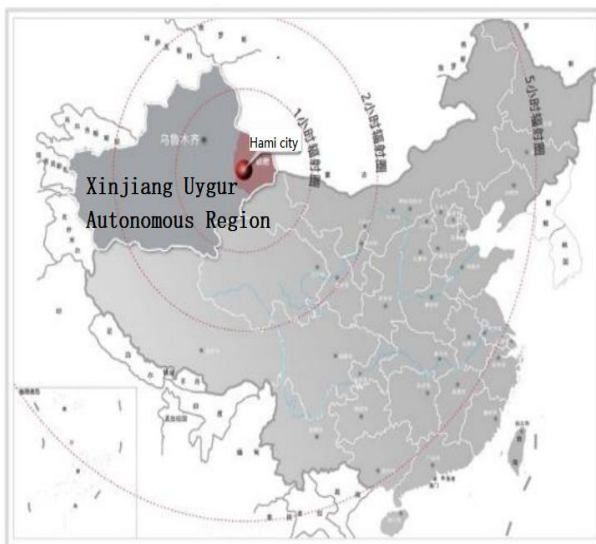
Tour Leaders: Ronghui LI & Ruozhu YANG

**Hami Gobi Ecological and Environmental Protection Work Team, Hami
Municipal People's Government
Hami Municipal Bureau of Culture, Sports, Radio, Television and Tourism
Hami Municipal Bureau of Ecology and Environment
Hami Yardang Dahaidao Scenic Area Operation and Management Co., Ltd.**

PROGRAM:

Tour 6: Yardang Landform & Silk Road Customs Experience, Xinjiang Uygur Autonomous Region

This is a five-day scientific exploration journey. We will go deep into various parts of Hami to enjoy the beauty of Yardang landforms and ancient relics, and personally experience the the magnificence of Tianshan Mountains, and the humanistic charm of ancient city streets. Meanwhile, we will also lead a visit to the experimental plot for the protection and restoration of the Gobi's gravel layer in the Dahaidao Scenic Area, Hami City, Xinjiang. This trip perfectly shows the unique charm of the integration of natural wonders and local culture.



Price: \$1155per person/¥7890 per person

Price includes:

1. Transportation

- Flight (economy class) from Nanjing to Hami, Xinjiang Uygur Autonomous Region.
- Air-conditioned coach from the entire trip (including tolls, fuel, and parking fees).

2. Accommodation

- 4 nights in 2 local 4-star standard hotels (king/twin room per person).

3. Meals

- 4 breakfasts served at hotels;
- 3 lunches and 4 dinners are arranged in the field according to conditions.

4. Attractions Service

- Tickets: Providing tickets to all scheduled tourist attractions listed in the itinerary.
- Guidance Service: One professional English-speaking tour guide throughout the trip.

5. Insurance

- Personal travel accident insurance

Note:

The price is a preliminary estimate; the final cost will be subject to actual conditions.

Schedule

Day 1 (June 13, 2026)

- Flight from Nanjing to Hami
- Dinner at Hami Hotel
- Accommodation: Hami Hotel

Day 2 (June 14, 2026)

Morning:

- Breakfast at Hami Hotel.
- Tour to Hami Pterosaur-Yardang Dahaidao Scenic Area (Dahaidao Scenic Area for short). Visiting Gobi Turtle Rock, Double-headed Horse, Nuoer Tribe, Eskeshir Castle. Visit the soil profiles and experimental plots for Gobi's gravel layer conservation and restoration in Dahaidao Scenic Area.

Lunch at Hongliutan Tourist Reception Center.

Afternoon:

- Tour to the core area of Dahaidao Scenic Area (Pterosaur Grand Canyon, Water Source, Cave to the sky, Viewing Platform).
- Dinner in the Dahaidao Scenic Area and return to Hotel

Accommodation:

- Hongliutan Hotel / Pterosaur Hotel

Day 3 (June 15, 2026)

Morning:

- Breakfast at Hotel.
- Set out for the tourist attraction: Mysterious Great Wall, The Eye of Lop Nur and The Agate Beach

Lunch in the Dahaidao Scenic Area

Afternoon:

- Leave Dahaidao Scenic Area and set out for the East Tianshan.
- Dinner at East Tianshan Hotel.

Accommodation:

- East Tianshan Hotel

Day 4 (June 16, 2026)

Morning:

- Breakfast at Hotel.
- Tour to the Mingsha Mountain (Singing Sand)

Lunch in nearby restaurant (Koumenzi Lamb Soup).

Afternoon:

- Tour to the White Stone Scenic Area
- Tour to the Songshutang Scenic Area
- Tour to Tianshan Temple
- Dinner at Hami Hotel

Accommodation:

- Hami Hotel

Day 5 (June 17, 2026)

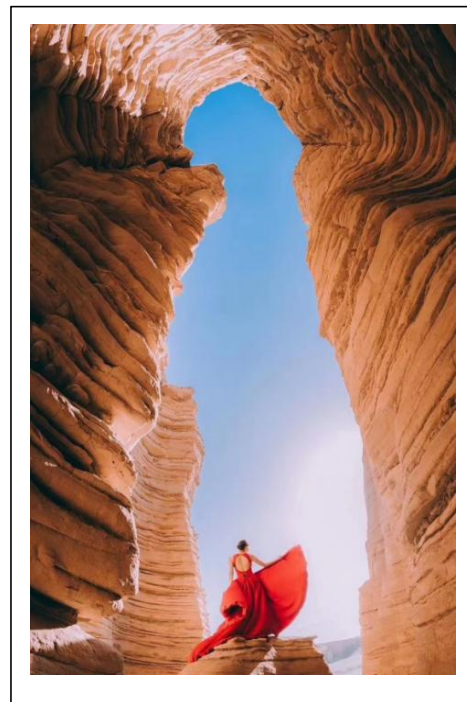
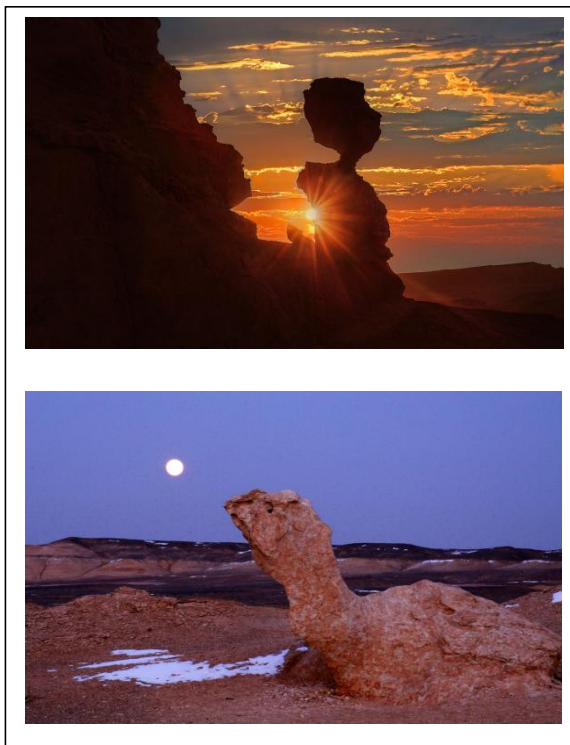
Breakfast at Hotel

Return Flight

Sites and Experimental plots Introcution

Site 1 Hami Pterosaur-Yadan Dahaidao Scenic Area

- China is one of the countries with the most extensive distribution of Yardang landforms in the world, and Hami Yardang is one of its major concentrated areas.
- This 5,000 square kilometers' geological wonder fully displays the entire process of the formation and development of Yardang landforms, making it one of the world's most magnificent, geologically mature and highly valuable Yardang landforms for sightseeing.
- Known as “China's Uninhabited Area, the World's Dadaidao”, this Yardang cluster along the ancient Silk Road preserves rare relics of ancient human settlements. It is also the discovery site of important paleontological fossils such as new pterosaur species including Hamipterus tianshanensis, Silutitan sinensis and Hamititan xinjiangensis. It boasts the largest and most fossil-rich pterosaur fossil site in the world. With its unique natural and cultural values, Hami Yardang has not only been selected as one of the nine representative landscapes of Xinjiang, but also recommended by the China Adventure Association as one of the premium national routes for adventure tourism.



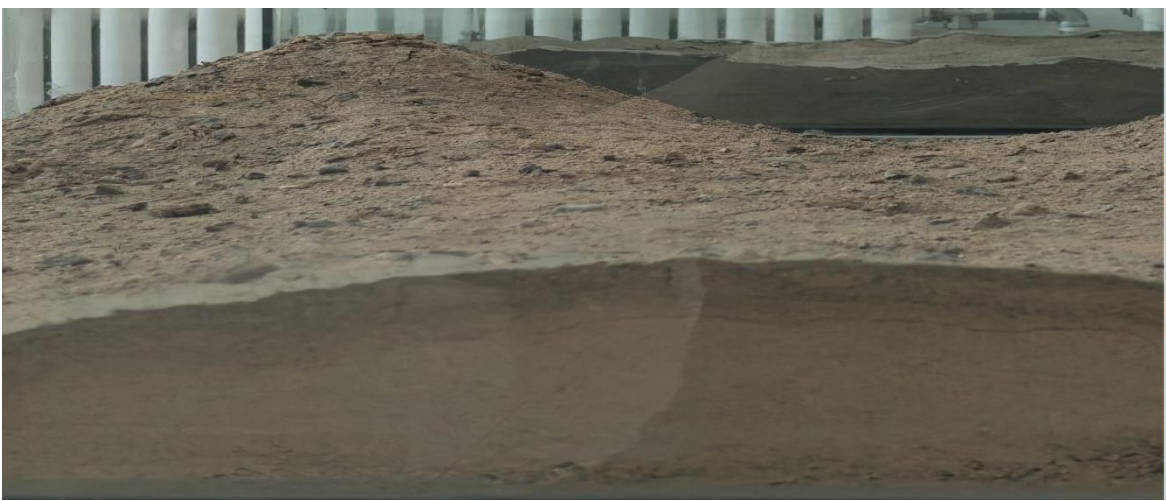


Site 2 Experimental plots for the protection and restoration of the Gobi's gravel layer in the Dahaidao Scenic Area, Hami City, Xinjiang.

- Desertification is a major global ecological issue related to human survival and development. The gravel layer on the Gobi acts like a natural protective shell, holding sand in place and reducing dust and sandstorms.
- Hami city has a Gobi area of 94,600 square kilometers, accounting for two-thirds of the city's municipal area, one-third of Xinjiang's total Gobi area, and one-eighth of China's total Gobi area. Located on the main transport path of China's sand sources, Hami serves as a key wind-sand corridor in Northwest China. Protecting the gravel layer here is of great significance to national desertification prevention and control. Furthermore, Hami's gravel layer's protection initiative has contributed the "China-Hami Solution" to global challenges including coordinated governance of dust sources, improved ecological governance in global arid regions, desertification prevention, and biodiversity loss.
- On August 15, 2023, the CPC Hami Municipal Committee and the People's Government of Hami launched the Gobi ecological survey, assessment, protection and restoration project. Led by the Nanjing Institute of Environmental Sciences, jointly implemented by several well-known domestic research institutes specializing in ecological protection and restoration, the project has carried out pilot restoration of the Gobi's gravel layer in the Dahaidao Scenic Area.
- The research team has developed a series of rapid crusting restoration technologies for Gobi tourist attractions with intensive human activities, which can quickly form a protective layer on severely damaged gravel layers within 1–2 days, effectively suppressing dust without harming soil microorganisms. Verified by long-term practice, this technology facilitates effective soil crust and profiles, and features high pressure resistance, wind erosion resistance and good water

retention , as well as fast construction. It has met the standards for engineering application, successfully solving the problems of difficult restoration and slow effectiveness of damaged Gobi surfaces.

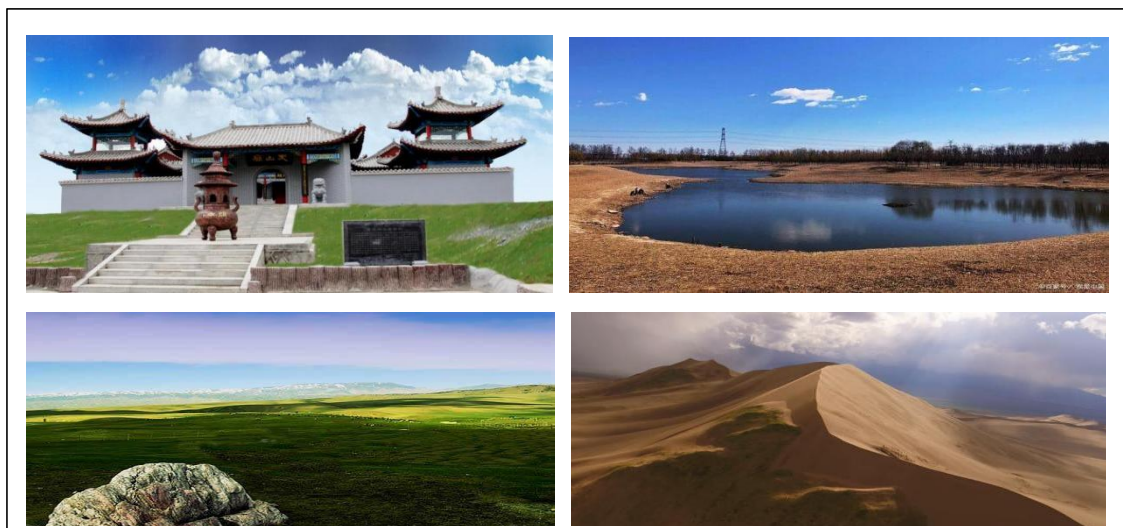
- At present, two test plots and a one-kilometer demonstration section have been set up near scenic spots such as the Gobi Turtle Rock and Nuer Tribe.



Site 3 The East Tianshan Scenic Area (AAAA)

East Tianshan Scenic Area brings together four major attractions: Mingshashan (Singing Sand dune), Baishitou (White Stone), Songshutang (Pine Pond), and Tianshan Temple. It encompasses a diverse landscape of snowy mountains, grasslands, forests, and deserts within a single region. The area is especially renowned for its extraordinary microclimate, described as "experiencing four seasons in one day, and a different sky every 5 kilometers."

- Ming Sha Mountain is famed for its echoing sands and ranks among China's four most famous singing sand dunes. Legend has it that during the Tang Dynasty, the heroic female general Fan Lihua once mustered her troops in this place, leaving a legendary imprint on this vast desert.
- Baishitou features expansive alpine meadows and lush pine forests. Nestled within is a large, translucent white boulder shaped like a reclining ox—a poetic, timeless image frozen in the green wilderness.
- Songshutang offers different view in four seasons: In summer it provide a good choice for refreshing from the heat; In winter a perfect destination for skiing and snow appreciation.
- Tianshan Temple, originally built during the Tang Dynasty, serves not only as an excellent vantage point for panoramic views of the entire East Tianshan Mountain range but also carries profound cultural significance, enriched by inscriptions and poems left behind by generations of poets.



Reference:

People's Government of Hami City, Xinjiang Uygur Autonomous Region

<https://www.hami.gov.cn/>

Introduction to Hami Daohaidao Scenic Area

https://www.hami.gov.cn/hami/xhtml/mlhm/mlhm_ydddjq.html

https://you.ctrip.com/sight/hami567/4361354.html?renderPlatform=#ctm_ref=www_hp_bs_lst

Introduction to East Tianshan Scenic Area

https://www.hami.gov.cn/hami/xhtml/mlhm/mlhm_hmtds.html

https://you.ctrip.com/sight/yiwu2505/5601368.html?renderPlatform=#ctm_ref=www_hp_bs_lst

Introduction to Barkol Scenic Area

https://www.hami.gov.cn/hami/xhtml/mlhm/mlhm_gcjq.html

https://you.ctrip.com/place/barkol2494.html?renderPlatform=#ctm_ref=www_hp_bs_lst