

Guide for WCSS 2026 Attendees in Nanjing, China

Welcome to Nanjing, China!



Content

01 Visa Application

02 Guide in Nanjing

1. Weather in Nanjing (June 2026)
2. Punctuality
3. Essential Apps in China
4. Currency Exchange
5. Transportation
6. SIM Card & Mobile Data
7. Mobile Payment Guide
8. WiFi & Internet Access
9. Other Essential Information
10. How to Get Train Tickets

03 Related Services

1. Emergencies
2. Telecommunications
3. Service Numbers



01 Visa Application

Entry into the People's Republic of China

We look forward to seeing you to Nanjing for WCSS2026 in June 2026. Before your trip, we kindly remind you to check whether you need to apply for a Chinese visa to enter the People's Republic of China by contacting your local Chinese embassy or by visiting their [website](#).

The WCSS2026 Organizing Committee requires all registered participants to independently verify their eligibility for entry into the People's Republic of China and regularly check the official website of the Chinese embassy or consulate in their country for the latest updates on visa and entry policies.

Important Reminders

- ★ Valid Passport: Ensure that your passport is valid for at least **six months** upon entry.
- ★ Your information must be provided exactly as it appears on your passport. Any differences between the information on your passport and the those on your invitation letter or other documentation could lead to a delay and/or denial of your visa.
- ★ Visa Preparation in Advance: Visa applications may require a long processing time; we recommend early travel confirmation and visa application (**at least three months**).
- ★ Special Cases: TE invitation letters are required for visa applicants from Türkiye, Sri Lanka, Pakistan, etc., which means visa applications from these countries may take more time.
- ★ If you have questions, please contact the Chinese embassy or consulate in your country.



01 Visa Application

Application Process for Visa Request

★ Register for WCSS2026 by providing personal information necessary for the invitation letter during the registration process.

★ Pay the registration fee for WCSS2026.

★ Allow a minimum of one week for the review of visa information.

★ The invitation letter will be sent to your email address.

★ For any additional inquiries, please reach out wcss2026.visa@issas.ac.cn.

Please be informed that the preparation of the invitation letter is scheduled by the end of 2025, and we will send the invitation letter to you as soon as possible.

FAQs for Visa Application

Q: If I want to participate in WCSS2026, how do I get a visa invitation letter?

A: You need to complete the registration process as a delegate on the official registration portal, finish the payment, and the visa invitation letter will be sent as soon as possible.

Q: Can I extend my visa while in China?

A: Yes, in most cases, you can apply for a visa extension at the local Public Security Bureau (PSB) Exit-Entry Administration in China. However, extensions are subject to approval and may not always be granted.

Q: Can I enter China with a visa that is about to expire?

A: No, your visa must be valid at the time of entry and exit. Additionally, your passport should have at least 6 months of validity remaining.



01 Visa Application

Q: Can I transfer my Chinese visa to a new passport?

A: No, Chinese visas cannot be transferred to a new passport. If you obtain a new passport, you must apply for a new Chinese visa and provide both the old and new passports during the application process.

Q: I still have not received my visa, who can I reach out to expedite the process?

A: If you have not received your visa within the expected timeframe, you may contact the embassy or consulate where you submitted your application.

Q: What if I need additional supporting documents besides the invitation letter to apply for a visa?

A: Please contact our visa team by email: wcss2026.visa@issas.ac.cn.



02 Guide in Nanjing

You could go to this website: [NanjingEnglish](http://NanjingEnglish.com) to have comprehensive knowledge of Nanjing in history, nature, culture, food, and guidance of living in Nanjing.

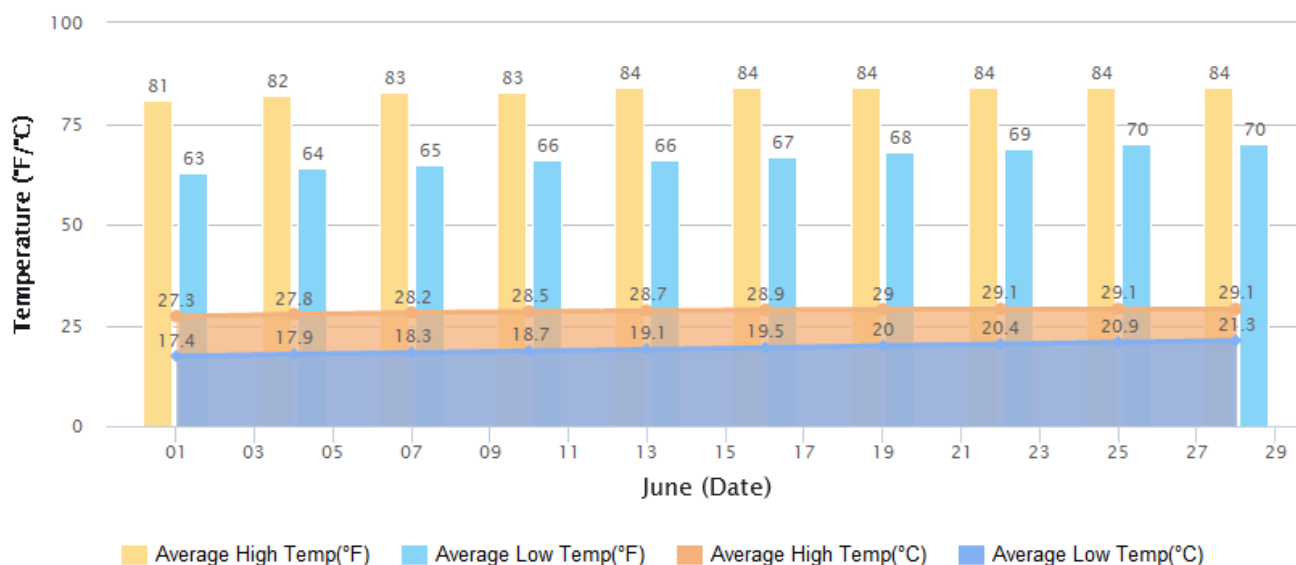
Weather in Nanjing (June 2026)

The temperature **during the congress dates (June 7-12, 2026)** is typically warm, expected to range between **23°C (73°F) and 30°C (86°F)**.

Humidity: Be prepared for moderate to high humidity levels common in June.

Rain: June marks the beginning of the Plum Rain season in Nanjing. While prolonged heavy rain isn't constant, **pack a compact umbrella or light raincoat** as short showers or thunderstorms are possible.

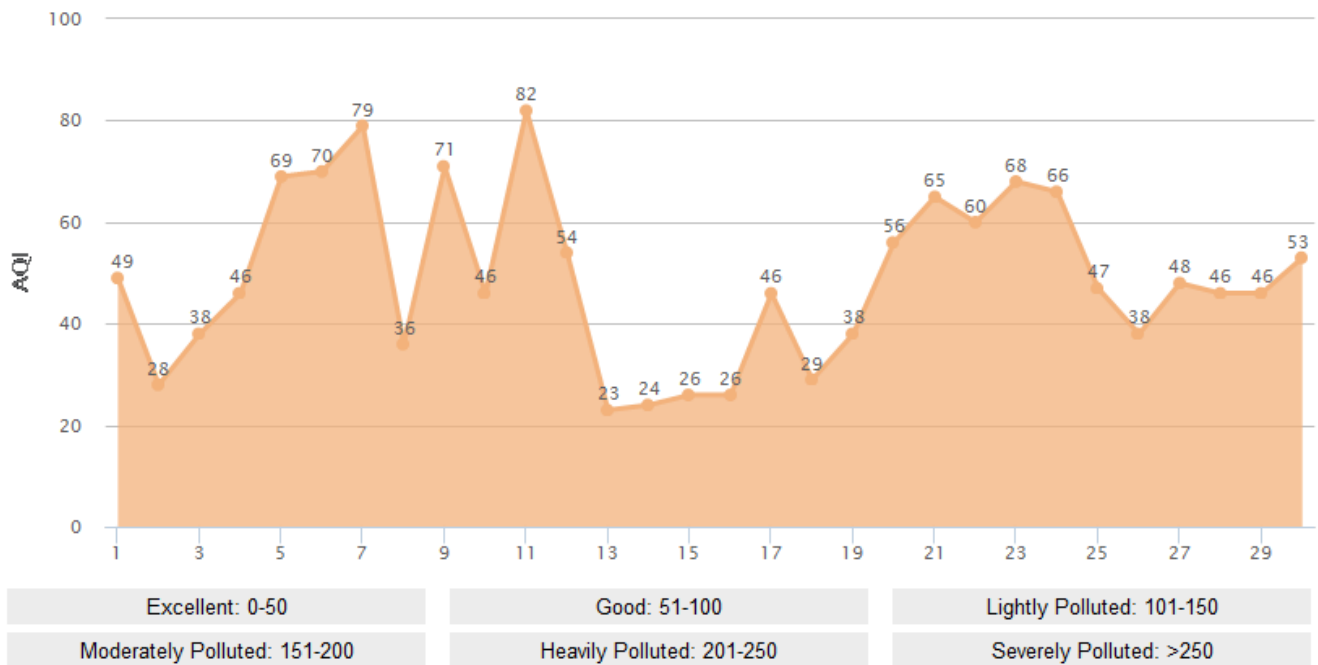
Sunshine: Expect ample sunshine. **Sunscreen, sunglasses and a hat are recommended.**



High/Low Temperatures of Nanjing in June (source: Travel China Guide)



02 Guide in Nanjing



Air Quality of Nanjing in June (source: Travel China Guide)

Punctuality

Punctuality is highly valued in Chinese business and social culture.

Please arrive on time, or ideally 5-10 minutes early, for all scheduled congress activities, meetings, and transport.

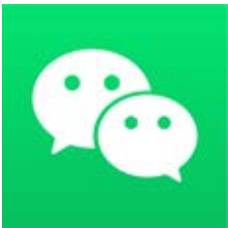
This ensures smooth proceedings and demonstrates respect for the organizers, speakers, and fellow attendees.



02 Guide in Nanjing

WeChat

We highly recommend that you download WeChat, as it is likely that most payments in China are conducted through this platform.



WeChat (微信, Wēixìn) is the dominant multi-purpose app in China, combining features like WhatsApp (messaging & calls), Facebook (social feed), and digital wallets (WeChat Pay).

Why You Need It:

Staying Connected: Easily network with other attendees and stay in touch after the academic forum.

Mobile Payments: See [Section 7](#) below.

Translation Tools: Built-in features can help with simple translations.

Getting Started with WeChat:

Download: Get the app from the official website (<https://www.wechat.com/en/>) or your phone's app store (search "WeChat").

Register: Sign up using your [international mobile phone number](#).

Verify: Enter the [SMS code](#) sent to your phone.

Set Up Profile: Add a profile photo and name (helps us identify you!).



02 Guide in Nanjing

WeChat

WeChat also offers additional features like posting photos and making payments. To learn more, visit:

How to Use WeChat: <http://www.wikihow.com/Use-WeChat>

WeChat Functions Guide: <http://www.wikihow.com/Use-the-Functions-of-WeChat>

WeChat Help Center: https://help.wechat.com/cgi-bin/newreadtemplate?t=help_center/index&lang=en&Channel=helpcenter

Important: Download and register before arriving in China if possible. Some users report difficulties receiving the SMS verification code on certain international networks after entering China.

Need Help? Don't hesitate to ask our team at the registration desk or info booth if you encounter issues setting up WeChat upon arrival.

You may scan this WeChat QR Code to add Dr. Jinlong Dong, who is responsible for the organization of WCSS2026, but only in case of urgent situations.



WeChat QR Code of Dr. Jinlong Dong



02 Guide in Nanjing

Currency Exchange

Chinese Currency: The Renminbi (RMB or CNY), with the primary unit being the Yuan (¥).

Best Options:

Before Travel: Exchange a small amount of currency to CNY in your home country for immediate expenses (taxi, small purchases) upon arrival.

ATMs: Widely available at airports, major banks, hotels, and shopping centers. **Use ATMs affiliated with major international networks (like Cirrus, Plus) or large Chinese banks (Bank of China, ICBC).** Check with your bank about international withdrawal fees and inform them of your travel plans. This is often the most convenient and cost-effective way.

Bank Exchange: Banks offer good rates but may have limited hours and require your passport.

At Nanjing Lukou International Airport (NKG): Currency exchange counters and ATMs are available in both Terminal 1 and Terminal 2. Check locations upon arrival.

Exchange Rates: Check real-time rates before exchanging: <https://www.xe.com/> or <https://wise.com/gb/currency-converter/>.

Credit Cards: Major international credit cards (Visa, Mastercard) are accepted in larger hotels, upscale restaurants, and some international chain stores, **but not universally**. Always have cash or mobile payment as backup.



02 Guide in Nanjing

Transportation

From Nanjing Lukou International Airport (NKG) to Nanjing International Expo Center

By Metro:

Take Airport Express Line S1 → Transfer to Line S3 at Nanjing South Railway Station → Transfer to Line 2 at Youfangqiao Station → Alight at Yuantong Station (Exit 1) (12 min walk to venue).

Travel Time: ~1 hour 20 min | Cost: ¥8-10.

Note: Signs are bilingual; buy tickets at ticket vending machine (cash/WeChat/Alipay).

By Taxi/Ride-Hailing:

Official Taxis: Queue outside Terminal 1/2. Show this address:

“请到南京国际博览中心 (建邺区江东中路300号)”

(Nanjing International Expo Center, No. 300 Jiangdong Middle Road, Jianye District).

Travel Time: ~50 min | Cost: ¥150-200 (including highway toll).

Didi (Ride-Hailing App):

Download Didi Chuxing (works with international numbers). Select “English” in settings.

Travel Time: ~50 min | Cost: ¥150-200 (including highway toll).

Shuttle Bus:

The organizing committee will arrange shuttle bus at the airport to pick up all participants. Detailed arrangement will be put on the congress website and related email will also be sent to your registered email account.

Travel Time: ~50 min | Cost: Free

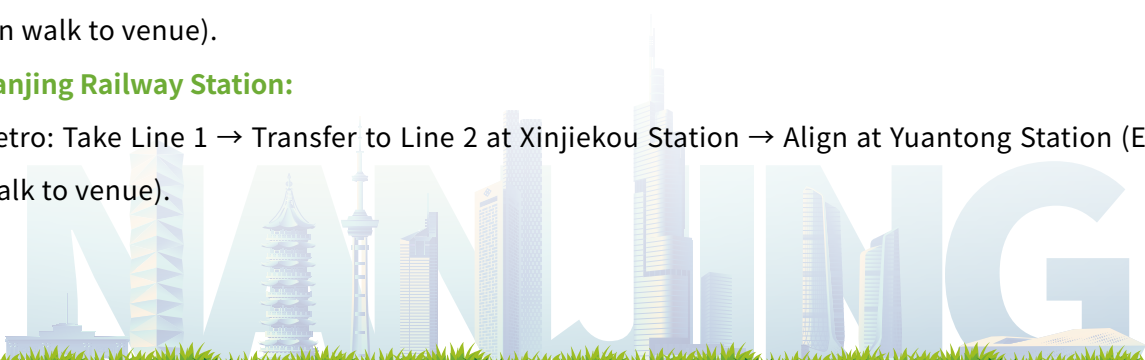
From Nanjing Railway Stations to the Venue

Nanjing South Railway Station:

Metro: Take Line S3 → Transfer to Line 2 at Youfangqiao Station → Alight at Yuantong Station (Exit 1) (12 min walk to venue).

Nanjing Railway Station:

Metro: Take Line 1 → Transfer to Line 2 at Xinjiekou Station → Align at Yuantong Station (Exit 1) (12 min walk to venue).



02 Guide in Nanjing

Transportation

Daily Commute to Nanjing International Expo Center

The organizing committee will arrange shuttle bus at the recommended hotels to pick up participants to the venue. Detailed arrangement will be put on the congress manual.

Getting Around Nanjing

Metro: Fastest way. 13 lines cover major areas (¥2-7). Runs 5:40 AM–11:00 PM.

Taxis: Base fare: ¥11 (first 3 km) + ¥2.5/km afterward.

Bikeshare: Apps: Meituan Bike or Hello Bike (scan QR code; requires Chinese SIM/local number).

Walking: Expo Center area (Jianye District) is walkable with wide sidewalks.

Essential Tips

Payment: Set up Alipay or WeChat Pay (link international card).

Carry ¥50-100 cash for emergencies.

Apps to Download:

Maps: Google Maps (works with VPN), Baidu Maps (Chinese, but reliable).

Translation: Google Translate (offline Chinese pack).

Safety: Avoid unlicensed taxis. Use official queues or Didi.

Keep venue address handy in Chinese.

Key Phrases

“Nanjing International Expo Center” – 南京国际博览中心 (Nánjīng Guójì Bólǎn Zhōngxīn)

“Please use the meter” – 请打表 (Qǐng dǎbiǎo)

“Where is the metro station?” – 地铁站在哪?(Dìtiě zhàn zài nǎ?)



02 Guide in Nanjing

SIM Card & Mobile Data

Highly Recommended:

Getting a local Chinese SIM card provides affordable and reliable mobile data and local calls, essential for navigation (Google Maps may not work reliably, use alternatives like Apple Maps, Maps.me, or Baidu Maps with VPN), communication (WeChat), and mobile payments.

Where to Get One:

Nanjing Lukou Airport (NKG): Look for counters of major providers (China Mobile, China Unicom, China Telecom) after baggage claim/before exiting arrivals. Present your **passport**. This is very convenient upon arrival.

City Stores: You can visit official China Mobile, China Unicom, or China Telecom stores in the city (passport required).

Alternative

International Roaming: Check with your home carrier about roaming packages, but these are often significantly more expensive than a local SIM.



02 Guide in Nanjing

Mobile Payment Guide

Read detailed payment guide in China in the website of the People's Bank of China:

<http://www.pbc.gov.cn/en/3688110/3688172/5188125/5274061/index.html>.



Guide to Payment Services in China.pdf

WiFi & Internet Access

Hotel & Venue: Complimentary WiFi will be available at the official congress hotel and venue. Connection details will be provided upon check-in/registration.

Public WiFi: Nanjing offers free public WiFi networks like “**Nanjing_Free_WiFi**” or “**Wireless Nanjing**” in some areas (parks, tourist spots, some transport hubs). **Connection can be unreliable and speeds slow. Security is not guaranteed.**

Cafes/Restaurants: Most cafes, restaurants, and shopping malls offer free WiFi to customers (ask staff for the password).



02 Guide in Nanjing

Other Essential Information

Power Sockets & Voltage: China uses **Type A (two flat pins)** and **Type I (three pins, including an inverted V)** sockets. The standard voltage is **220V**, 50Hz. **Bring a universal travel adapter suitable for China.** Check if your devices support **220V** (most modern electronics like laptops and phone chargers do).



China's power socket

Tap Water: Do not drink tap water. Only drink bottled water or boiled water (provided in hotel rooms/kettles).

Language: While English will be used for the congress, learning a few basic Mandarin phrases is appreciated (e.g., "Nǐ hǎo" - Hello, "Xièxie" - Thank you, "Bù yào" - No thanks, "Duōshǎo qián?" - How much?). Translation apps (like Google Translate - download offline Chinese pack before arrival, or Microsoft Translator) can be very helpful. Hotel staff in international chains usually speak some English.

How to Get Train Tickets

Traveling by high-speed rail (HSR) is one of the best and most efficient ways to explore China. The network is extensive, the trains are modern and comfortable, and the experience is a must-do. Navigating the ticketing system can seem daunting, but it's straightforward once you know how. This guide will walk you through everything you need to know.



02 Guide in Nanjing

Before You Start: Essential Preparation

Your Passport is Key: This is the most important takeaway. You MUST use your passport (**not a driver's license or any other ID**) to purchase tickets and to board the train. Ensure your passport is valid for your entire trip.

Payment Method: International credit cards (Visa, MasterCard, Amex) are not widely accepted on most Chinese ticketing platforms. The most common payment methods are **Chinese bank cards, Alipay, or WeChat Pay**.

Solution for Tourists: Download **Alipay** and look into its “**TourCard**” feature (previously known as **TourPass**), which allows you to top up a digital wallet using an international card. You can also try **linking your international card directly to Alipay**. This will be your most versatile tool for payments in China.

How to Buy Tickets: Four Methods

Method 1: Online - The Official 12306 App & Website (Cheapest, No Fees)

This is the official railway booking system operated by China State Railway Group. Both the app and website have a functional English version.

Steps:

1. Download & Register: Download the “China Railway 12306” app from your app store or visit [\[www.12306.cn\]\(https://www.12306.cn\)](https://www.12306.cn). Click “Register” and carefully fill in all your personal details. It is crucial that your name is entered exactly as it appears in your passport and that your passport number is correct.

2. Search & Select: Enter your departure and arrival cities, and your travel date. You'll see a list of available trains. **G**-series (e.g., G123) are the fastest, followed by **D**-series trains.



02 Guide in Nanjing

3. Book & Pay: Select your preferred train and seat class (Second Class, First Class, or Business Class). Add yourself as a **passenger**, ensuring you select Passport as your ID type. Proceed to payment. **Alipay** is usually an available option.

4. e-Ticket: You will receive an **electronic ticket**. You do **NOT** need to print a paper ticket. Simply use your passport to board the train.

Method 2: Online - Third-Party Apps (Easiest, English Support)-Suggested!

Apps like **Trip.com** (formerly Ctrip) are incredibly foreigner-friendly. They offer excellent English interfaces and customer support, and they accept international credit cards.

Steps: The process is very similar to any international travel site. Search for your route, select your train, enter your passenger details (passport information), and pay with your international card. You will receive a confirmation email.

Method 3: Offline - Train Station Ticket Counter (No Tech Needed)

You can always go to any major train station and buy a ticket **directly** at the **ticket counter**.

Steps:

1. Find the “Ticket Office” or look for the signs that say “售票处”.
2. Prepare a Note: To overcome the language barrier, write down the following information in

Chinese and hand it to the clerk:

Date: e.g., 2025.8.22

From: e.g., Beijing

To: e.g., Shanghai

Train Number: e.g., G123 (optional, if you have a preference)

Seat Class: e.g., Second Class

Quantity: e.g., One ticket

3. Hand over your passport and the note. The clerk will process your ticket.



02 Guide in Nanjing

Method 4: Offline - Ticket Vending Machines (TVMs) at Stations

Most major train stations have **self-service** ticket vending machines with an English language option.

Steps: Select English on the touchscreen, then follow the instructions. You will be prompted to scan the photo page of your passport for identification and to make a payment (often with a Chinese bank card or Alipay/WeChat Pay).

How to Board the Train

1. Security Check: Before entering the main hall, all bags must go through an X-ray scanner, and you will walk through a metal detector.

2. Find Your Gate: Inside the waiting hall, look for the large electronic departure boards. Find your train number and identify your **Check-in Gate** (检票口 - Jiǎnpiaò kǒu).

3. Ticket Check (Boarding): About **15-20** minutes before departure, your gate will open. To pass through the automatic gates, place your passport on the scanner. The system will read your passport, verify your ticket, and open the gate **if everything is correct**.

4. Find Your Carriage and Seat: On the platform, find your carriage number (displayed on signs and on the side of the train itself). Once onboard, find your seat number (e.g., 05C). Store your luggage **in the overhead racks or at the ends of the carriages**.



02 Guide in Nanjing

Important Tips & Advice

Book in Advance: Trains, especially on popular routes and during Chinese holidays (Spring Festival, National Week in October), can **sell out** days or weeks in advance. Book as early as you can (tickets usually become available 15 days before the travel date).

Keep Your Passport Handy: You will need it multiple times: at the station entrance for security, at the ticket gate to board, and occasionally for inspection on the train.

Understand Seat Classes:

Second Class (二等座 - Èr děng zuò): The most common and economical option. Seating is 3+2 per row.

First Class (一等座 - Yī děng zuò): Wider seats, more legroom, and 2+2 seating per row. Generally quieter.

Business Class (商务座 - Shāngwù zuò): The most luxurious option with large reclining seats, complimentary food and drinks, and access to station lounges.



03 Related Services

Emergencies

Police: 110

Fire: 119

Road Traffic Accident Police: 122

Emergency Medical Rescue: 120

Red Cross Emergency Number: 999

Telecommunications

How to make an international landline call to Nanjing from abroad?

+86-25 (Nanjing Area/Telephone Code) -XXXXXXX

How to get a number for a mobile phone, or set up internet?

You can log on to the official website of a Chinese telecom operator or visit one of their branches with your valid passport.

China Mobile <https://www.chinamobiletd.com/en/global/home.php>

China Unicom <https://www.cuguplus.com/home>

China Telecom <https://www.chinatelecomglobal.com/>



03 Related Services

Service Numbers

Entry and exit

China Immigration Service Hotline 12367

National Customs Service Hotline 12360

Travel

China Railway 12306

Air China 95583

Eastern Airlines 95530

China Southern Airlines 95539

Juneyao Airlines 95520

Spring Airlines 95524

Xiamen Airlines 95557

Hainan Airlines 95339

Shenzhen Airlines 95361

Shandong Airlines 95369

Communication

Telephone number enquiry service hotline 114

China Mobile 10086

China Unicom 10010

China Telecom 10000

We hope this guide helps you prepare for a smooth and enjoyable experience at WCSS 2026 in Nanjing!

The Organizing Committee is here to assist you. Have a productive and memorable congress!

